

Technical Specifications

Power supply	21.6 ... 25.2VDC
Power consumption	Standby: <100mW Red: 4.8W Green: 2.0W Blue: 3.2W Warm white: 9.4W max: 10W
Dimming range	0 ... 100%
Ambient temperature	0 ... 55°C / 32 ... 131°F
Humidity	max. 95% r.H. (non condensing)
PWM frequency	200Hz
Energy efficiency (EU) 2017/1369	G
Colour temperature	typ. 3000k (warm white)
Luminous flux	typ. 741.5lm (warm white)
Colour rendering index (CRI)	min. 80
Beam angle	120°
Unified glare rating (UGR)	<19
Dimensions	D = 80mm, H = 70mm
Safety rating	IP20
Maintenance & Cleaning	This device is free of maintenance and may only be cleaned with a dry cloth.

LOXONE

LOXONE

Need Help?

loxone.com/support

Loxone Electronics GmbH
Smart Home 1
4154 Kollerschlag
Austria

loxone.com

V090123



LED Ceiling Spot RGBW Tree Gen. 1

Part No: 100237 (White)
Part No: 100280 (Anthracite)

About the product

The Loxone LED Ceiling Spot RGBW Tree is a downlight with RGB and warm white light outputs. It only works in combination with the Loxone Tree Extension.

Installation & electrical connection

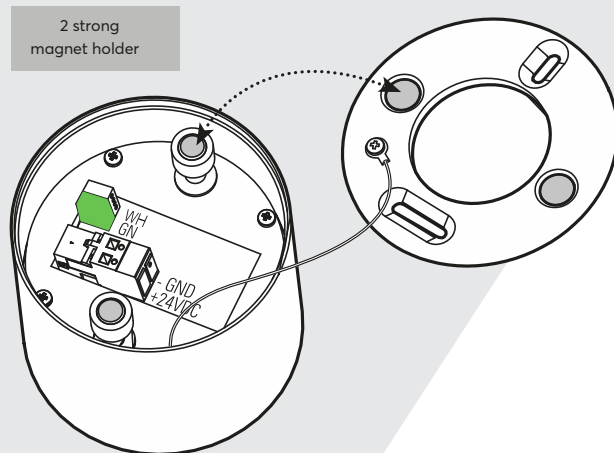
The installation of this device has to be carried out by a qualified person. The device has to be fitted in accordance with building regulations for electrical and fire safety. If the device is not installed according to manufacturers guidelines the protection of the device may be affected.

Loxone Tree

Wire cross-section	0.25 ... 0.8mm ² / AWG23 ... 18
Stripping length	5mm / 0.2"
Temperature resistance	-40 ... 105°C / -40 ... 221°F

Power supply

Wire cross-section	0.75 ... 2.5mm ² / AWG18 ... 13
Stripping length	5mm / 0.2"
Temperature resistance	min. 80°C / 176°F for IEC, min. 75°C / 167°F for UL



This folder is a part of the product!

DRY LOCATIONS ONLY • POUR EMPLACEMENTS SECS SEULEMENT •
CLASS 2 INPUT ONLY • ENTRÉE DE CLASSE 2 UNIQUEMENT



For additional information, declaration of conformity,
visit www.loxone.com/help/ledceilingspot